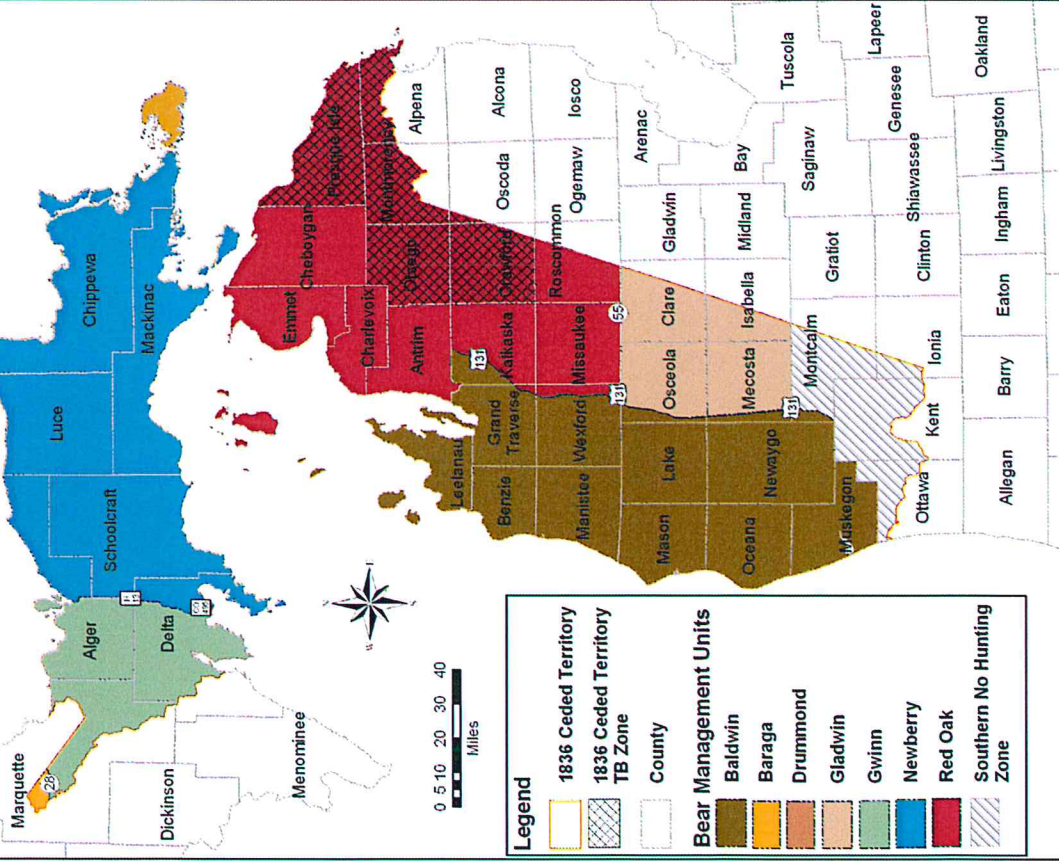


# Tribal Black Bear Management Units



2017

# Annual Black Bear Regulation Booklet

*Giiewsedaa Mazina'igan*

## Black Bear Hunting Rules

1. Please reference 2009 Hunting Regulation Book for additional information regarding hunting regulations.

## **Black Bear Hunting Regulations**

The regulations in this handbook are for black bear hunting. Hunters must abide by all other Tribal regulations. In the event of a conflict, these regulations control.

### **Applying for Bear Permits**

Tribal Members interested in harvesting bear must apply for a harvest tag from the LRBOI Natural Resources Department. The application must include the top three management unit the Tribal Member is interested in.

Bag limits are one bear per year.

Black Bear Open Season:	DATES: Sept 10—Oct 26, 2017
Bear Management Units	2017 Tribal Tags Available
Baraga	54
Gwinn	45
Newberry	54
Baldwin	30
Gladwin	6
Red Oak	27

### **Possession and Transportation**

A legal and current Tribal License and harvest/transport tag is required to take, transport and possess black bear. The tags are only valid in the specified bear management unit. The hunter must immediately fill out the harvest / transport tag and attach it to the lower jaw of the bear.

### **For more information contact:**

Natural Resource Department: 231-723-1594  
Conservation Law Enforcement: 231-723-6241  
Weekends/After hours: Contact  
Central Dispatch: 231-723-6241

For more information contact Conservation Law Enforcement or  
Natural Resource Department, Wildlife Staff:

Phone: 231-723-1594  
Fax: 231-723-8873

Conservation Law Enforcement, Central Dispatch:  
231-723-6241



### **Weapons and Ammunition Prohibited**

Tribal Members **may not** use:

- Fully automatic firearms (possession during bear hunt also prohibited)
- Semi-automatic or center-fired rifles capable of holding more than 6 shells in both the chamber and magazine combined
- Cartridges containing either tracer or exploding bullets
- Devices known or used to silence firearms
- Firearms not specifically listed on page 5 of this booklet
- Explosives, live decoys, pitfalls, traps, poisons, medicated bait or harmful or stupefying substances

### **Shooting Hours**

Shooting hours are half an hour before sunrise to half an hour after sunset, local time. Tribal Members hunting black bear may not shoot a firearm, crossbow or bow outside of these hours.

### **Miscellaneous Restrictions**

Tribal Members may not engage in any of the following during a black bear hunt:

- The use of explosives, live decoys, pitfalls, traps, poisons, medicated bait or harmful or stupefying substances
- Shooting bears in dens or landfills
- Shooting cubs or sows with cubs

Tribal Members may not sell black bear parts, hides, meat or internal organs.

### **Black Bear Hunting Season**

The 2017 Black Bear hunting season is September 10—October 26 in all units.

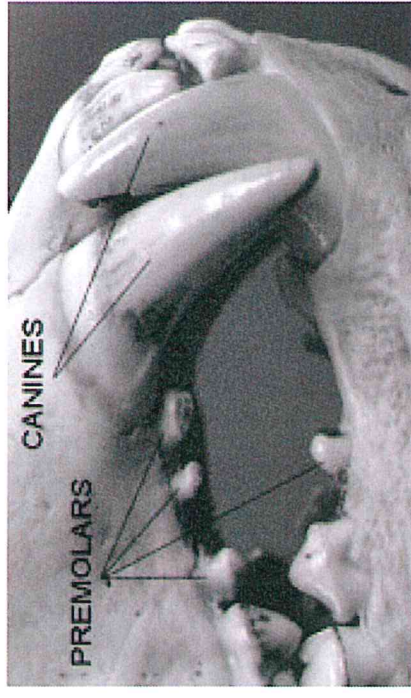
Lawfully taken black bear may be transported within or outside of the Ceded Territory providing the Tribal member has a valid and current Tribal license in their possession and the carcass has been properly sealed.

The harvest/transport tag must remain attached to the bear for transportation and until harvest seal is attached at a designated registration station.

### **Registration and Collection**

**The bear must be registered within three business days of the kill** at a Tribally-certified or Michigan DNR station. Registration is mandatory. If checked at a state-run or other tribal facility, Tribal Members must notify the LRBOI Natural Resources Department of the harvest and location of registration. Hunters may present the entire carcass or just the hide with claws, head and teeth still attached. The sealed registration tag must be retained until all the meat is consumed or disposed of.

A premolar tooth will be collected when the bear is registered and used to determine the age of the bear and genetic information.



## Baiting

Hunters may bait black bear subject to the following:

- Hunters may bait black bears with unlimited amounts of meat and meat products, fish and fish products, dog food, cat food, bakery or confectionary items such as jams, jellies, sweeteners, candies and other cooked or processed bakery items, including pie fillings and yogurts. **Products that contain chocolate or cocoa derivatives may not be used.**
- Hunters may use five gallons of grain per bait station, provided the grain is inaccessible to deer and elk. **Hunters cannot use grain in counties closed to deer and elk feeding or baiting.**
- All other materials, including fruits, vegetables, salt and minerals may be used in 100 lb. quantities starting October 1, except in counties closed to deer and elk feeding or baiting.
- All containers used to bait black bears in Tribal and public lands must be removed and disposed of properly.
- Hunters may not use bait that has been poisoned or medicated or that will harm or stupefy the bear.
- Bait stations may not be established or tended in the Ceded Territory before August 10 or after October 26.

## Dogs

Hunters may use dogs subject to the following:

- Dogs may be trained by pursuing black bear from July 1 through August 30.
- All dogs must be immunized and licensed with the license or owner's identifying information on their collars.
- No more than six dogs may run as a pack, regardless of the number of hunters or the ownership of the dogs.
- Packs may not be relayed.
- Individual dogs may not be replaced during a hunt.
- Dogs may not be trained on a captive, tethered or caged bear.
- Dogs may not be trained or used to hunt black bear in the Upper Peninsula from September 10 through September 14 or in the Red Oak Management Unit from October 2 through October 8.
- Dogs must be owned by a tribal member (with Article 13 rights) when used outside of the designated state permitted periods.

## Weapons and Ammunition Allowed

Tribal Members may use any of the following weapons and ammunition for a black bear hunt:

- Soft point or expanding bullets
- Center-fire rifles of .243 caliber or larger
- Rifled muzzle-loader of .40 caliber or larger (including rifled muzzle-loading handguns)
- Smooth bore muzzle-loader of .45 caliber or larger (including smooth bore muzzle-loading handguns)
- 12-gauge shotgun or larger, using slugs
- Bows with a pull of at least 30 pounds
- Crossbows with a pull of at least 100 pounds
- Arrows with broad heads having a cutting surface a minimum of one inch in diameter
- Conventional (smokeless powder) handguns of .357 caliber or larger, with straight walled cartridges only (single or multiple shot, but cannot exceed maximum capacity of 9 rounds in the magazine and barrel combined)
- Conventional (smokeless powder) handguns of .243 center-fire caliber or larger bottleneck cartridges (single or multiple shot, but cannot exceed maximum capacity of 9 rounds in the magazine and barrel combined)

## Concealed Weapons

Hunters may not carry concealed weapons on Tribal lands. Tribal Members may carry handguns with a valid concealed pistol license (CPL). Handguns must be carried in plain view while in the field. Transportation of handguns carried under a CPL must be in accordance with the terms of the CPL.