



2023

**Annual Black Bear Regulation Booklet**

*Giiewsedaa Mazina'igan*

## **Black Bear Hunting Regulations**

The regulations in this handbook are for black bear hunting. Hunters must abide by all other Tribal regulations. In the event of a conflict, these regulations control.

Bear hunters with firearms are required to wear a minimum of one square foot of hunters' orange that is visible from all sides.

## **Applying for Bear Permits**

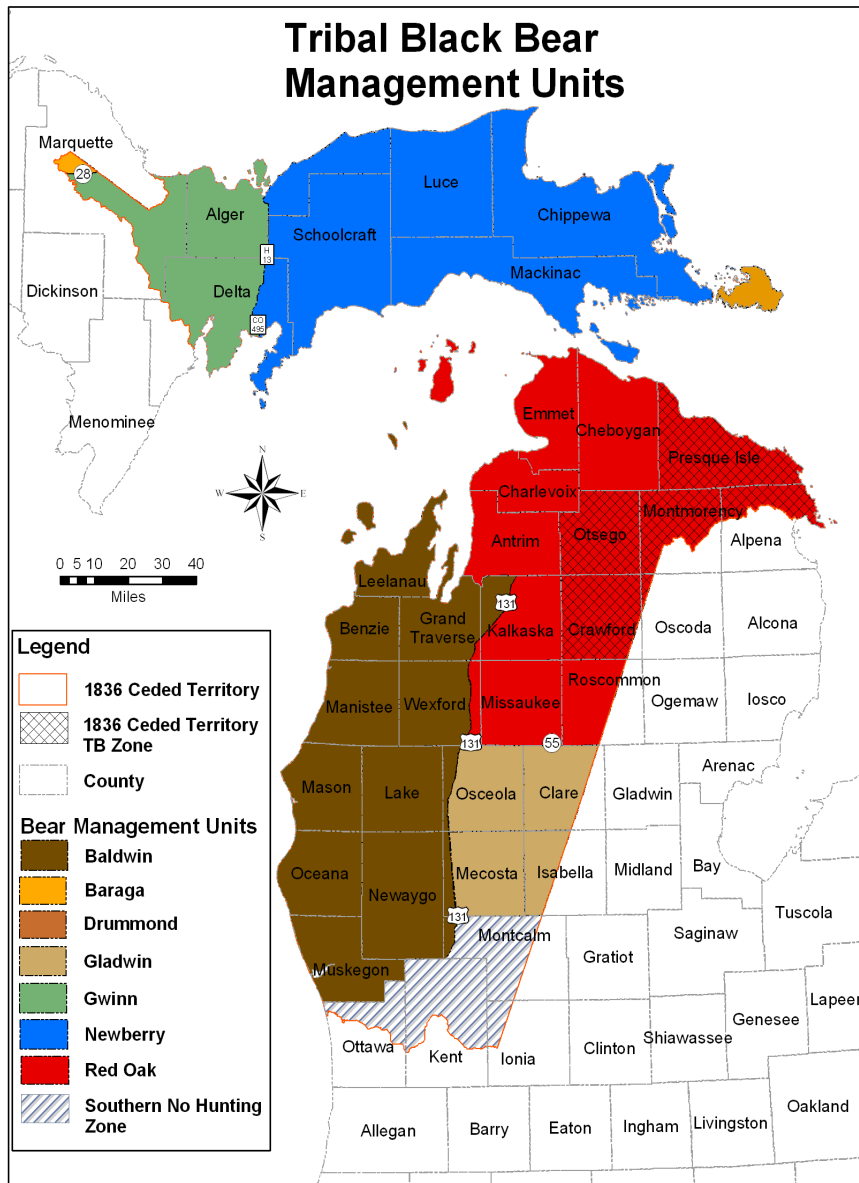
Tribal Members interested in harvesting bear must apply for a permit from the LRBOI Natural Resources Department. The application must include the first and second choice of Bear Management Units.

Black Bear Open Season:	<b>DATES: Sept 6—Oct 26, 2023</b>
Bear Management Units	2023 Tribal Tags Available
Baraga	36
Gwinn	20
Newberry	44
Baldwin	40
Gladwin	5
Red Oak	58

Bag limits are one bear per year.

## **Possession and Transportation**

A legal and current Tribal Identification Card and transport tag is required to take, transport and possess black bear. The transport tag is only valid in the specified bear management unit. The hunter must immediately fill out the transport tag and attach it to the lower jaw of the bear.



Lawfully taken black bear may be transported within or outside of the Ceded Territory providing the Tribal member has a legal and current Tribal Identification Card in their possession and the carcass has been properly sealed.

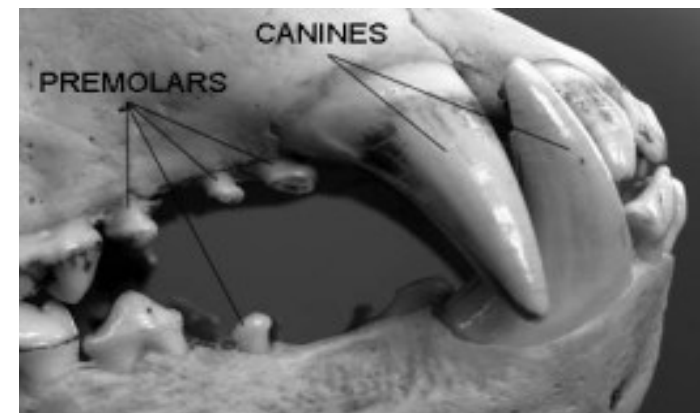
The transport tag must remain attached to the bear for transportation and until the harvest seal is attached at a designated registration station.

### Registration and Collection

**Bear must be registered within three business days of the harvest at a Tribally-certified or Michigan DNR station. Registration is mandatory.** If checked at a state-run or other tribal facility, **Tribal Members must notify the LRBOI Natural Resources Department of the harvest and location of registration.** (see page 7) .

Hunters may present the entire carcass or just the hide with claws, head and teeth still attached. The sealed registration tag must be retained until all the meat is consumed or disposed of.

A premolar tooth will be collected when the bear is registered and used to determine the age of the bear and genetic information.



## **Baiting**

Hunters may bait black bear subject to the following:

- Hunters may bait black bears with unlimited amounts of meat and meat products, fish and fish products, dog food, cat food, bakery or confectionary items such as jams, jellies, sweeteners, candies and other cooked or processed bakery items, including pie fillings and yogurts. **Products that contain chocolate or cocoa derivatives may not be used.**
- Any containers used to transport bait shall be removed immediately and disposed of properly.
- **It is unlawful to hunt over bait that has, within 100 yards of the bait site, any containers used to transport bait to the baiting site.**
- Only three bait stations may be tended per hunter.
- Hunters may not use bait that has been poisoned or medicated or that will harm or stupefy the bear.
- Bait stations may not be established or tended in the Ceded Territory before August 6 or after October 26.
- Food materials that lure, entice or attract deer and elk may be used **in bear baits under the following conditions:**
  - ◆ **In areas where deer baiting is allowed, up to two gallons of bait that attracts deer or elk can be used:**
    - ◆ **Prior to Sept. 15, if made inaccessible to deer and elk.**
    - ◆ **After Sept. 15, if used in accordance with all deer baiting requirements OR made inaccessible to deer and elk.**
  - ◆ **In areas where deer baiting is not allowed, up to two gallons of bait that attracts deer or elk can be used:**
    - ◆ **If made inaccessible to deer and elk.**

## **Barrel Baiting**

Hunters who want to barrel bait are responsible for ensuring that they are on private or tribal owned lands. Barrels are **NOT allowed on State, Commercial Forest, or U.S. Forest Service lands.**

- Cartridges containing either tracer or exploding bullets.
- Devices known or used to silence firearms unless the hunter meets all federal compliance requirements for use of a suppressor.
- Firearms not specifically listed on page 5 of this booklet.
- Explosives, live decoys, pitfalls, traps, poisons, medicated bait or harmful or stupefying substances.

## **Shooting Hours**

Shooting hours are half an hour before sunrise to half an hour after sunset, local time. Tribal Members hunting black bear may not shoot a firearm, crossbow or bow outside of these hours.

## **Miscellaneous Restrictions**

Tribal Members may not engage in any of the following during a black bear hunt:

- The use of explosives, live decoys, pitfalls, traps, poisons, medicated bait or harmful or stupefying substances.
- Shooting bears in dens or landfills.
- Shooting cubs or sows with cubs.
- Chase, pursue, shoot, or kill a swimming bear.

Tribal Members may not sell black bear parts, hides, meat or internal organs.

## **Black Bear Hunting Season 2023**

September 6 - October 26 in all Bear Management units.

## **To Report a Bear Kill or for more info:**

LRBOI Officer Bobby Robles	(231) 690-7319
LRBOI Officer Kyle Gunderson	(231) 590-2740
LRBOI Conservation Law Enforcement	(231) 723-6241
LRBOI Natural Resource Department:	
Monday-Friday 9am-5pm	(231) 723-1594
MDNR Check Station:	(989) 732-3541
	Ext. 5993



## **Weapons and Ammunition Allowed**

Tribal Members may use any of the following weapons and ammunition for a black bear hunt:

- Soft point or expanding bullets.
- Center-fire rifles of .243 caliber or larger.
- All muzzle-loaders shall be .50 caliber or larger.
- 12-gauge shotgun or larger, using slugs.
- Bows with a pull of at least 30 pounds.
- Crossbows with a pull of at least 100 pounds. Bolts and quarrels at least 14 inches and tipped with a broadhead at least 7/8 inch wide.
- Arrows with broad heads having a cutting surface a minimum of one inch in diameter.
- Conventional (smokeless powder) handguns of .357 caliber or larger, with straight walled cartridges only (single or multiple shot, but cannot exceed maximum capacity of 9 rounds in the magazine and barrel combined).
- Conventional (smokeless powder) handguns of .243 center-fire caliber or larger bottleneck cartridges (single or multiple shot, but cannot exceed maximum capacity of 9 rounds in the magazine and barrel combined).

## **Concealed Weapons**

Hunters may not carry concealed weapons on Tribal lands. Tribal Members may carry handguns with a valid concealed pistol license (CPL). Handguns must be carried in plain view while in the field. Transportation of handguns carried under a CPL must be in accordance with the terms of the CPL.

## **Weapons and Ammunition Prohibited**

Tribal Members **may not** use:

- Fully automatic firearms (possession during bear hunt also prohibited)
- Semi-automatic or center-fired rifles capable of holding more than 6 shells in both the chamber and magazine combined

Hunters may use barrel baiting subject to the following:

- Bait barrels used must be made of steel and securely anchored to a post in the ground with a chain or cable no more than eight feet in length;
- Bait barrels must have holes no greater than one inch in diameter, or twenty-two inches or greater.
- Only one barrel per bait station;
- Hunters are required to affix a tag with LRBOI and the hunter's tribal identification number or bear harvest tag number to the barrel; and
- Limit bait barrel locations within 400 yards of a road.
- Bait inside the barrel must be removed at the close of the bear season.
- Barrels must be removed no later than five days after the close of the bear season.

## **Dogs**

Hunters may use dogs subject to the following:

- Dogs may be trained by pursuing black bear from July 8 through April 15 of the following year (see exceptions below).
- Dogs **may not** be trained or used to hunt black bear in the Upper Peninsula from September 1 through September 10, in the Lower Peninsula on September 4 through September 10 and October 6 through October 12.
- All dogs must be immunized and licensed with the license or owner's identifying information on their collars.
- No more than eight dogs may run as a pack, regardless of the number of hunters or the ownership of the dogs.
- Packs may not be relayed.
- It is legal to replace individual dogs, provided eight or fewer dogs are used at one time or during the same day.
- Dogs may not be trained on a captive, tethered, or caged bear.
- Dogs must be owned by a tribal member (with Article 13 rights) when used outside of the designated state permitted periods.
- It is unlawful to begin to chase a bear with dogs between one half hour after sunset to one half hour before sunrise.

Continued

